



Jivass Technologies

BUILDING BRIDGES WITH WEB SOLUTIONS



Who We Are

Jivass Technologies LLP is a start up company empowering businesses with its innovative, cutting-edge solutions. We provide web workflow solutions and a web platform for IoT devices.

Our Expertise

Our team of web developers and engineers have extensive experience in creating custom websites and IoT based applications for a variety of Industries.

Our Services



CORPORATE WEBSITES

Design and Host Websites - Template, Identity, Branding, Design, Content Management System



WORKFLOW SOLUTIONS

Business Workflows for Process Digitalizations, Asset tracking, others



RESEARCH BASED PROTOTYPES

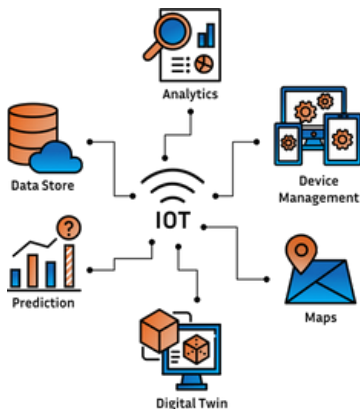
Design, Integrate, Shape Data, Field Test, Prototype, Role-based access

Our Product Offering

LIOMICHLA



IoT Web Platform for Devices



Target Domains



IOT Dashboard



Sports Management



Finance & Commerce



Energy & Utilities



Clinic & Healthcare



Maps & Logistics

Providing Solutions to Help Business Grow



Dashboard Features



Web-based
Dashboards



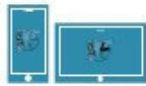
Escalation
Matrix



Backup/
Restore



Customised
warnings and
alerts



Mobile-Friendly



Analytics



Report
Generation



Configurations
and Notifications



Real-Time
Updates



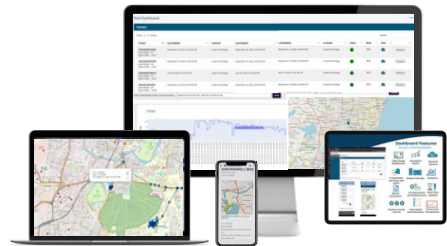
Feature Access
Control



Role based
authentication



Charts and
Visualization



OUR PHILOSOPHY

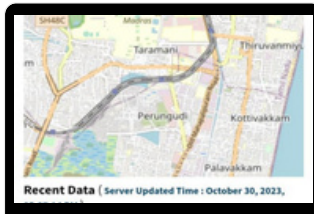
Let us grow together





GYRFALCON™ Devices

We provide customised sensor based IoT devices with wide range of applications in Logistics & Transport, Agriculture, Healthcare and Energy utility devices such as UPS/Genset



Sensor Gateway

Sensor Gateway for sensing temperature, humidity, pressure and other customisable sensor configurations. Support for configurable data sampling rates and alerts.

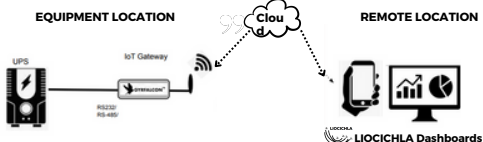
Asset Tracker

Asset Tracker for outdoor tracking and management of assets. Has support for geofencing and configurable alerts.

UPS Monitoring

The GYRFALCON™ IoT UPS Monitoring Gateway integrates with UPS appliances to provide real time information about UPS status, battery health, load levels, and overall UPS performance, enabling the conversion to Smart UPS

Cloud Enabling UPS using IOT



Features

01

Immobilization

02

Fuel monitoring

03

Actuator support

04

Tamper proof

05

Vibration monitoring

06

Motion detection

Specifications

Connectivity

GSM/WiFi/Bluetooth

Location

GNSS (with IRNSS support)

Interface

RS232/485/422

Enclosure

Thermal
Resistant/Polycarbonate

Data Logging

when no GSM -Up to 4
months (based on
configuration)

Security

End to End Data
Encryption

01

Our Vision

Forging a lasting bond of trust
with our clients and supporting
them in their digital aspirations.



02

Our Mission

Enabling our clients with high
quality, user friendly web design
going from research and
development to design and
implementation.



03

Our Values

Continuous skilling, Positive
Workforce, Customer Focus,
Delivering Values





LIOCICHLA IoT Platform

Dashboard Solutions

We provide advanced IoT-driven custom solutions that are highly configurable, featuring both web and mobile dashboard options, domain-specific customised solutions, and an extensive array of features, such as role based multi access, device management, configurations, reports and alerts

AMBULANCE STATUS TRACKER

Home / Ambulance

Ambulance

Show: 10 entries

Search:

Vehicle Detail	Last Update	Oxygen Level
Bolero - OD 02 0987	2 minutes ago	10.9
Tavera - OD 01 1234	5 minutes ago	82.4

Showing 1 to 2 of 2 entries

Previous 1 Next

Manager Dashboard

Welcome to Manager Dashboard

Home / Dashboard

Sites Inverter Information Components Information Alarms

Sites Locations

Show: 10 entries

Search:

Site Details	Inverters	Map
KR1001A Address - No 1, Developed E&E, Industrial Estate, Perungudi Chennai, Tamil Nadu, India		
KR1001B Address - L, Raja Industrial Estate, Hosanur Bangalore, Karnataka, India		

Showing 1 to 2 of 2 entries

Previous Next

Products

Home / Products

Show: 10 entries

Search:

Model Name	Quantity	View	Edit	Delete
INV101 Manufacture Date - Nov. 3, 2020 Warranty - 1 year	1000 In-stock - 990	QL	EF	W
INV104 Manufacture Date - Oct. 29, 2019 Warranty - 5 years	280 In-stock - 275	QL	EF	W
INV110 Manufacture Date - Nov. 3, 2020 Warranty - 1 year	1000 In-stock - 1000	QL	EF	W

ADMIN DASHBOARD

Home / Launches

Type Designator Category Components

Add

Show: 10 entries

Search:

Name	Quantity	View	Edit	Delete
Battery101 Manufacture Date - Jan. 4, 2021 Warranty - 1 year	4000 In-stock - 3004	QL	EF	W
ulv10176 Manufacture Date - Feb. 1, 2021 Warranty - 5 years	10000 In-stock - 9992	QL	EF	W

Showing 1 to 2 of 2 entries

Previous 1 Next

Backup

Backup Format: Partial Backup (selected sensor tables in csv format)

Date Range: 2023/12/08 01:40:30.288 - 2023/12/09 01:40:30.288

Backup Type: ☒ Version ☐ Customer

Version: All S2 Feb5 S1


Tracker: All 300H001402J4FMS A301051A10423MU W00G000BPXU2320_old

contact@jivass.com

Jivass Technologies

BUILDING BRIDGES WITH WEB SOLUTIONS

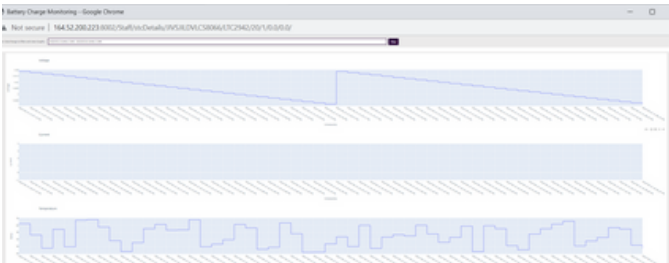
Getting You Ready For An Automated Future With IOT Customisation



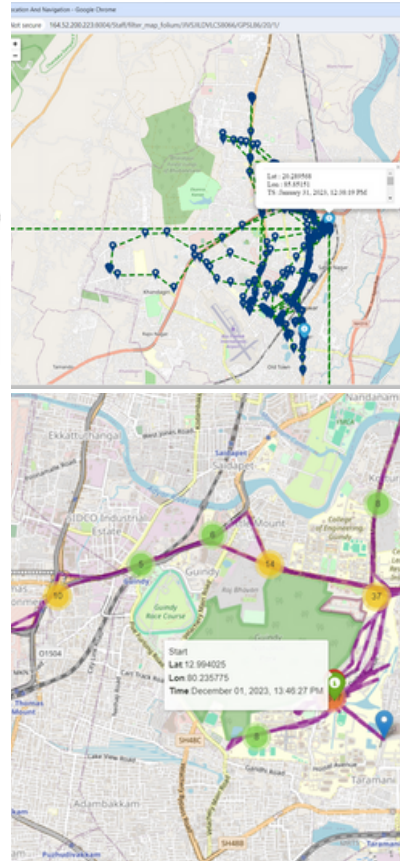
Graphs



Alerts



Route Maps



Contact Us

Ashwamedha, 1st Floor,
No.121, Fl, Velachery Main
Road, Guindy, Chennai -
600032 Adjacent to
Behindwoods

contact@jivass.com

9884039642
8056473117

<http://www.jivass.com>

www.linkedin.com/company/jivass-technologies/